

Grazia & Co

1 / 10-14 Advantage Road
Highett, Vic, 3190
Phone +61 3 9555 5760

20 / 108 Dunning Avenue
Rosebery, NSW, 2018
Phone +61 2 8914 0350

meadmore

Corded Reclining Chair (1953)



Straw



Black



Stainless Steel



Natural
Cotton



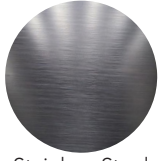
Black

Designed by Clement Meadmore and crafted in Australia by Grazia & Co, this reclining chair features a durable stainless steel frame, hand-corded with marine grade polypropylene or cotton rope. Suitable for indoor and outdoor use, it includes a removable headrest and comes in a range of colours.

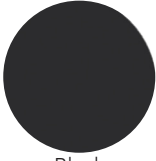
Craftsmanship:	Designed and manufactured in Australia.
Materials:	Stainless steel frame, hand corded with polypropylene (exterior & interior use) or cotton (interior use) rope.
Lead time:	10 to 12 weeks. Lead times may vary during peak periods.
Suitability:	Indoor and outdoor (polypropylene rope only).
Warranty:	2 years*

grazia&co®

Frame specifications



Stainless Steel



Black
Powder Coat

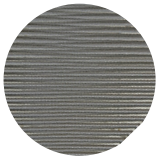


Drift
Powder Coat

Upholstery specifications



Black



Grey



Olive



Straw

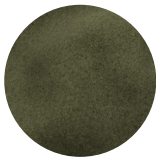


Natural Cotton
(Indoor only)

Headrest specifications



Sheepskin
(Indoor only)



Moss
Toweling



Seashell
Toweling

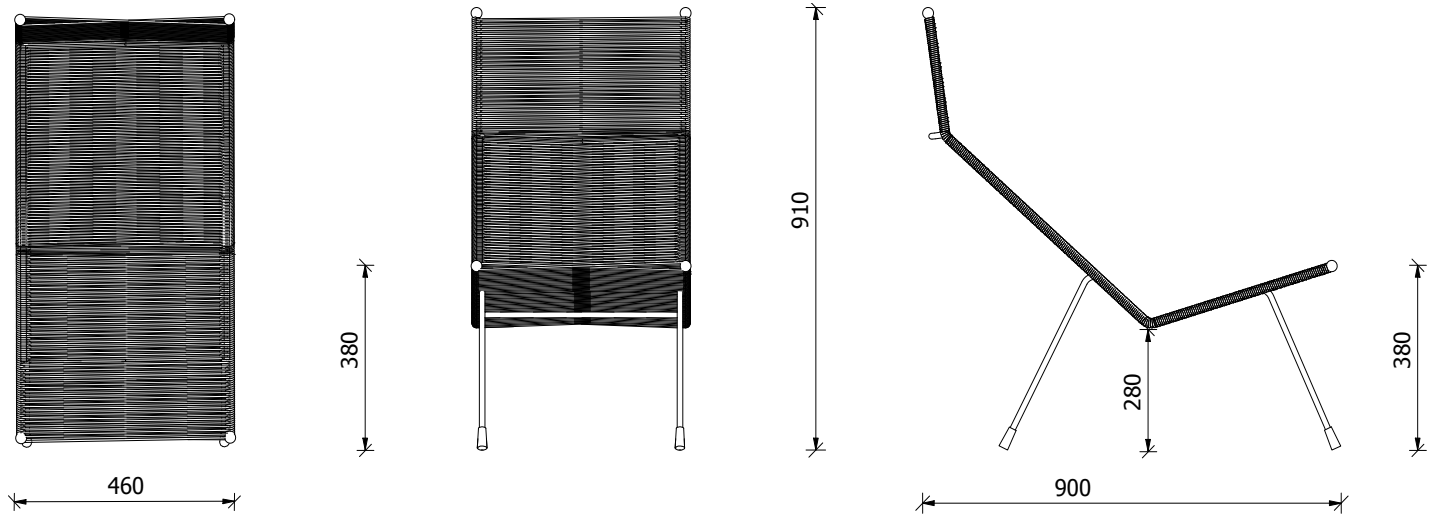


Sand
Toweling



Black
Perforated Vinyl

Technical specifications



Care, Maintenance & Warranty

To ensure the longevity and integrity of your Grazia & Co product, we recommend following our care and maintenance guidelines. For detailed care instructions, warranty information and maintenance recommendations specific to your product, visit: www.graziaandco.com.au/care-maintenance-warranty

* 2 years warranty on the structural integrity of the frame.

