

grazia&co melbourne
1 / 10-14 advantage road
highett, vic, 3190
phone +61 3 9555 5760

grazia&co sydney
12b, 32 ralph street
alexandria, nsw, 2015
phone +61 2 8914 0350

ellis table



made in australia, the ellis outdoor dining table has a powdercoated round formed stainless steel base with a stone or compact laminate top. It is part of the ellis outdoor range which includes bench seats in curved and straight versions and an ottoman.

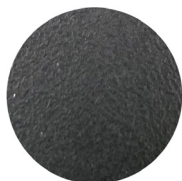
grazia&co[®]

stone



flamed
zimbabwe

compact laminate



black

powder coat



texture charcoal



texture suede



apo grey



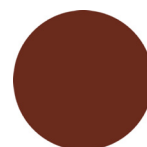
stone



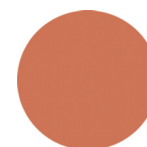
texture black



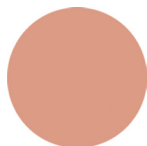
shoji white



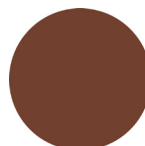
mpavilion red



clay



coral



earth



dark bronze



mangrove



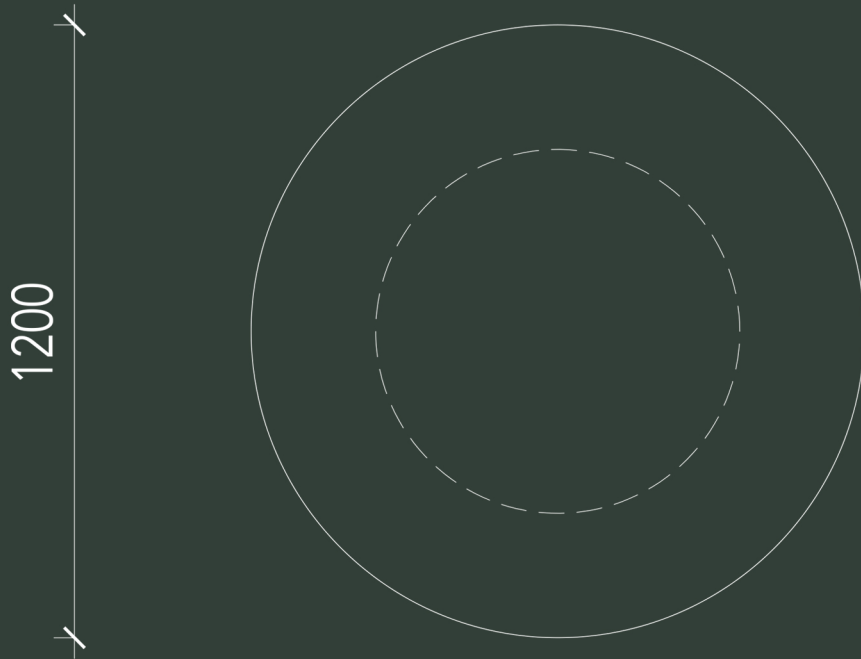
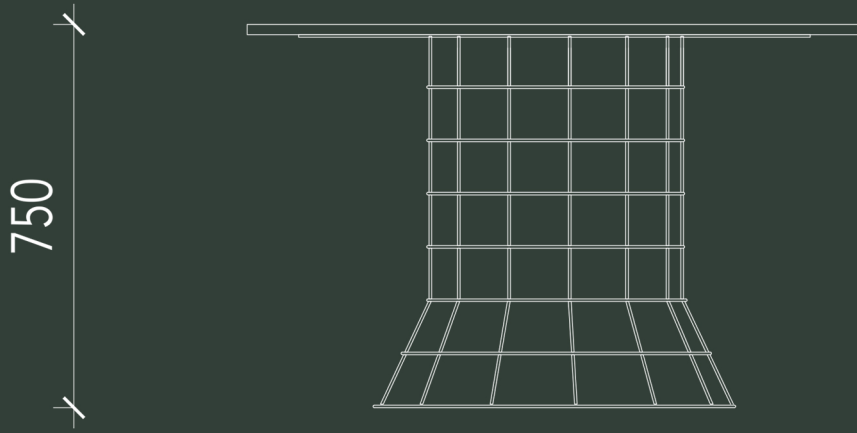
transformer grey



grazia&co[®]

technical specifications

ellis table



grazia&co[®]

year released
2017

warranty - outdoor furniture

- i. warranty period of 3 years for the structural integrity of the frame under 'normal use'
- ii. chipping and scratches on powder coated metal due to wear and tear are not warranted
- iii. general wear and tear or changes in appearance and performance resulting from being exposed to the elements are not warranted.
- iv. all materials sourced by external and independent suppliers that have unique and specific warranty details that can be obtained as required on request.
- v. broken, missing or ceased attachments like levelling feet, rubber stoppers and felt pads are not warranted.
- vi. raw metals oxidise and tarnish over time and are not considered faults of manufacturing.

all terms outlined in this document are applicable exclusively to projects and orders that are based in australia.
for warranty claims outside australia, please note that a 12 month warranty period will apply, all claims are to be taken up with the international selling agent

to view the full warranty please refer to the link below
<https://graziaandco.com.au/grazia-terms-and-conditions/>

craftmanship: manufactured in australia

materials

top: flamed zimbabwe stone or compact laminate
frame: powder coated stainless steel
lead time: 8-10 weeks. lead times may vary during peak periods
suitability: outdoor use



finishes & product care

granite

surfaces grazia & co use various marbles, granites, bluestone and tiles. these stones are a natural product so the colour and veins can vary. these hard surfaces can be cleaned with warm soapy water. leaving food residue or liquid on the stone for an extended period can penetrate the stone and cause permanent staining. staining and chipping of the stone is not covered under the warranty and is considered general wear and tear.

compact laminate

compact laminate is scratch resistant but not scratch proof. compact laminate products are easy to clean, solvent resistant and water resistant. dust with a soft cloth. clean stubborn marks with warm water and household detergent or window cleaner is also a good option. never use wool metallic scourers as these will scratch the compact laminate surface.

powder coat

wash as required with warm soapy water using a soft clean cloth. for marine or commercial environments, we recommend regular cleaning. do not pressure wash or steam items that are powder coated. if powder coating chips due to a knock and / or rough treatment this is not covered by warranty. touch up paint can be purchased on request (depending on availability). scratches and chips should be repaired as soon as they appear.

please visit [grazia&co website](#) for further details.