

grazia&co
1 / 10-14 advantage road
highett, vic, australia, 3190
info@graziaandco.com.au

melbourne
phone +61 3 9555 5760
sydney
phone +61 4 5555 1243

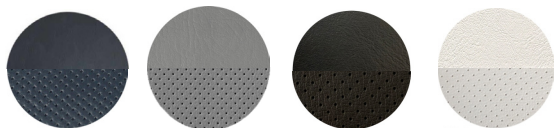
dita stool



made in australia, the dita stool features a solid steel rod frame with a brass or stainless steel footrail and fully upholstered seat. available in range of powdercoat and upholstery options, the stool comes with an upholstered back, open back or without a back.

grazia&co[®]

house vinyl



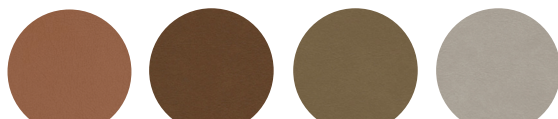
navy
plain/perf

grey
plain/perf

black
plain/perf

off white
plain/perf

premium vinyl



russet

umber

oak

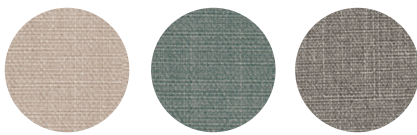
mushroom



avocado

bottle green

putty



arena

aqua

montana

house leather

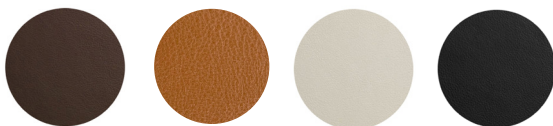


2208

2500

3328

3360



5458

5478

white

black

sheepskin



black

latte

natural

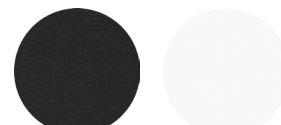
house powder coat



texture charcoal

texture suede

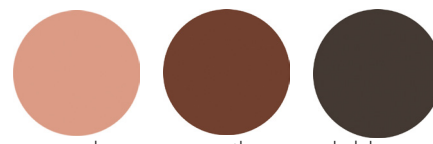
apo grey



texture black

texture white

premium powder coat



coral

earth

dark bronze



stone

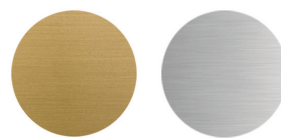
transformer
grey

mangrove
grey

custom

*custom upholstery
and powder coat
as specified*

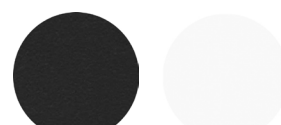
foot rail



natural brass

stainless steel

cap to feet



black cap

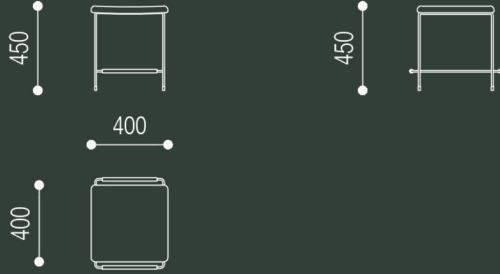
white cap

grazia&co[®]

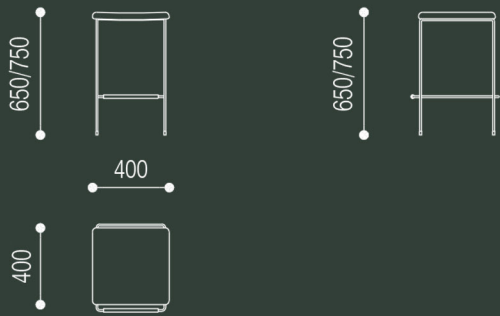
technical specifications

dita stool

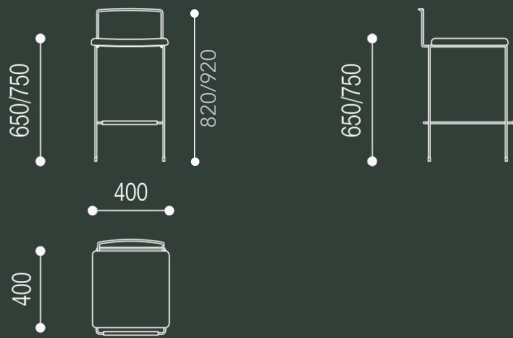
¹ dita junior



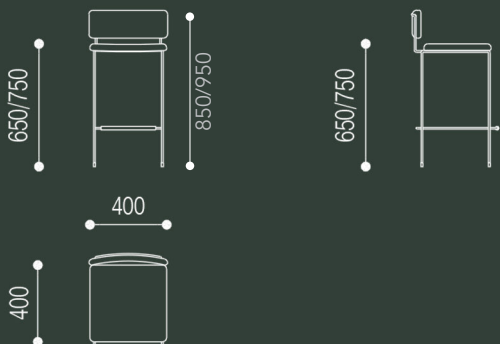
² dita no back



³ dita open back



⁴ dita upholstered back



dimensions

dita junior stool



dita junior stool

400l x 400w x 450h

dita no back stool



dita no back
400l x 400w x 650sh



dita no back
400l x 400w x 750sh

dimensions

dita open back stool



dita open back
400l x 400w x
650sh/820bh



dita open back
400l x 400w x
750sh/920bh

dita upholstered back stool



dita upholstered
back
400l x 400w x
650sh/850bh



dita upholstered
back
400l x 400w x
750sh/950bh

sh - seat height
bh - back height

3d models available upon request

grazia&co[®]

design registration no
201616493 / 201616492/
201616491 /201615714

year designed
2016

warranty

- i. warranty period of 3 years for the structural integrity of the furniture under 'normal use'
- ii. chipping and scratches on powder coated metal due to wear and tear are not warranted
- iii. metal pieces that are not specific to outdoor use that are exposed to the elements are not warranted
- iv. raw metals oxidise and tarnish over time and not considered faults of manufacture.

all terms outlined in this document are applicable exclusively to projects and orders that are based in australia.

for warranty claims outside australia, please note that a 12 month warranty period will apply, all claims are to be taken up with the international selling agent

to view the full warranty please refer to the link below
<https://graziaandco.com.au/grazia-terms-and-conditions/>

craftmanship: designed and manufactured in australia

materials

seat and backrest: ply seat and backrest with foam and specified upholstery

frame: powder coated steel with brass or stainless steel footrail.

lead time: 8-10 weeks

suitability: indoor use



australian
made

3

3 year
warranty

grazia&co[®]

finishes & product care

house leather care

protect from direct sunlight, heat and weather. dust with a clean dry cloth or use the soft brush attachment on your vacuum cleaner. remove all liquid and food spills immediately. wipe with a clean cloth dampened with proprietary brand leather cleaner suitable for a surface finish leather.

house vinyl care

maintaining and care of the upholstery should be done by regular vacuuming to remove dust and dirt. spot cleaning should be done immediately after a spill. first spot clean with mild soap and water. using a sponge to remove the stains, rinse with clean water.

suntan lotions and sprays such as insect repellants may discolour the fabric. acid based liquids such as coffee, wine and fruit juice need to be wiped off immediately. the longer a stain or spill remains on the fabric the more difficult it can be to remove. do not use abrasive alcohol based or solvent based cleaners.

sheepskin

store away from direct sunlight and high heat sources, such as blow dryers and radiators. never rub or brush sheepskin when it's wet. to clean up small spills on your sheepskin upholstery, wipe with a damp cloth, and gently pluck any debris from the suede with tweezers. never use hot water. this causes permanent damage by stripping the natural oil, (lanolin) from the pelt making it very hard and rough. for professional cleaning, select a cleaner that specialises in leather/suede/fur.



finishes & product care

custom specified upholstery

please refer to individual suppliers for information on care and maintenance of fabrics that have been specified by a designer, as these will be outside the standard grazia&co range. most interior upholstery fabric should be regularly vacuumed and kept away from direct sunlight.

powder coated items care

wash as required with warm soapy water using a soft clean cloth. for marine or commercial environments, we recommend regular cleaning. do not pressure wash or steam items that are powder coated. if powder coating chips due to a knock and / or rough treatment this is not covered by warranty. touch up paint can be purchased on request (depending on availability). scratches and chips should be repaired as soon as they appear.

please visit grazia&co website for further details.

<https://graziaandco.com.au/care-and-maintenance/>



australian
made



no direct
sunlight



do not dry
clean



do not
machine
wash



do not iron

grazia&co[®]