

grazia&co melbourne
1 / 10-14 advantage road
highett, vic, 3190
phone +61 3 9555 5760

grazia&co sydney
12b, 32 ralph street
alexandria, nsw, 2015
phone 0455 551 243

como mirror



designed by beatrix rowe: for grazia&co – released in 2020.

australian made large, medium and small wall mounted mirrors with hook detail. metal frame in powder coat or brass with natural or bronzed finish. these pieces can be installed vertically or horizontally.

design registration no. 202011518

grazia&co®

powder coat

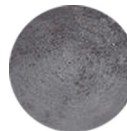


texture black

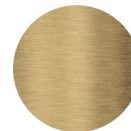


texture suede

brass frame



bronzed finish



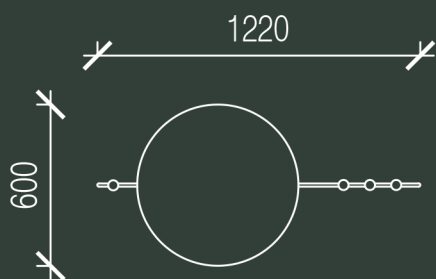
natural brass

custom finishes as specified

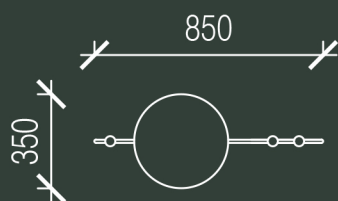
grazia&co[®]

technical specifications

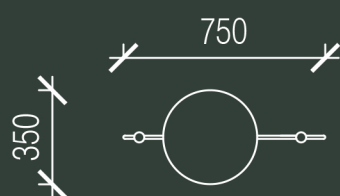
1



2



3



grazia&co[®]

product specifications

designer

beatrix rowe

registration number

202011518

year designed

2020

warranty

- i. warranty period of 3 years for the structural integrity of the furniture under 'normal use'
- ii. chipping and scratches on powder coated metal due to wear and tear are not warranted
- iii. metal pieces that are not specific to outdoor use that are exposed to the elements are not warranted
- iv. raw metals oxidise and tarnish over time and not considered faults of manufacture.

to view the full warranty please refer to the link below

<https://graziaandco.com.au/grazia-terms-and-conditions/>

craftmanship:

designed and manufactured in australia

materials

frame:

mild steel in powder coat or brass
with natural or bronzed finish

lead time:

8-10 weeks approx

suitability:

indoor use



australian
made

3

3 year
warranty

grazia&co[®]

finishes & product care

designer

beatrix rowe

registration number

202011518

year designed

2020

powder coated items

wash as required with warm soapy water using a soft clean cloth. for marine or commercial environments, we recommend regular cleaning. do not pressure wash or steam items that are powder coated. if powder coating chips due to a knock and / or rough treatment this is not covered by warranty. touch up paint can be purchased on request (depending on availability). scratches and chips should be repaired as soon as they appear.

glass

these hard flat surface materials should be cleaned and or dusted with a soft cloth. for more stubborn marks, use a non-abrasive mild soap and damp cloth. never use wool metallic scourers as these will scratch the surface. chipping and scratching are considered wear and tear of the product are not warranted.

please visit [grazia&co website](#) for further details.



australian
made



no direct
sunlight



do not dry
clean



do not
machine
wash



do not iron

grazia&co[®]